



**156 Lincoln Road, Skegness, PE25 2DN**  
**Offers in the region of £175,000**

**V**  
**VENDOORS**  
ESTATE • AGENTS



156 Lincoln Road, Skegness, PE25 2DN



Summary

This charming and deceptively spacious home offers a well-balanced mix of traditional layout and modern functionality, spread across approximately 994 sq. ft. (92.3 sq. m). The ground floor boasts a bright living room, an extended galley-style kitchen, and a versatile bedroom perfect for guests or a home office. Upstairs, you'll find three further bedrooms, a contemporary bathroom, and a compact landing. With well-proportioned rooms, a practical flow, and multiple bedroom options, this property is ideally suited to families, sharers, or those needing flexible living arrangements. Please note there is also an additional ensuite for the ground floor bedroom.

Living Room

12'3" x 11'8" (3.73m x 3.56m)

Welcoming and cozy space located at the front of the property. Offers enough space for comfortable seating and entertainment setups.

Hallway

5'11" x 15'0" (1.80m x 4.57m)

A central corridor linking the front entrance with the stairs, living room, and kitchen. Provides access to the full depth of the ground floor.

Kitchen

6'8" x 18'4" (2.03m x 5.59m)

A long, galley-style kitchen offering good countertop space and appliance potential. Rear door allows for access to the garden area.

Bedroom Ground Floor

32'9""29'6"" x 29'6""0'0"" (10'9" x 9'0")

A versatile rear-facing bedroom that could serve well as a guest room, office, or second living area.

Landing

5'5" x 5'9" (1.65m x 1.75m)

Small but efficient, it connects all the upper-floor rooms.

Bedroom 1

9'11" x 11'11" m (3.03 x 3.64 m)

The largest upstairs bedroom, with enough space for a double bed and wardrobes.

Bedroom 2

9'9" x 11'3" (2.97m x 3.43m)

Another double-sized room with a slightly narrower width, making it ideal for a child’s room or secondary double.

Bedroom 3

8'3" x 8'8" (2.51m x 2.64m )

Usable as a single bedroom, study, or nursery.

Bathroom

8'4" x 8'1" (2.54m x 2.46m )

A well-sized bathroom. Suitable for family needs.









Grandad  
lives here  
when he's not  
out fishing



Family



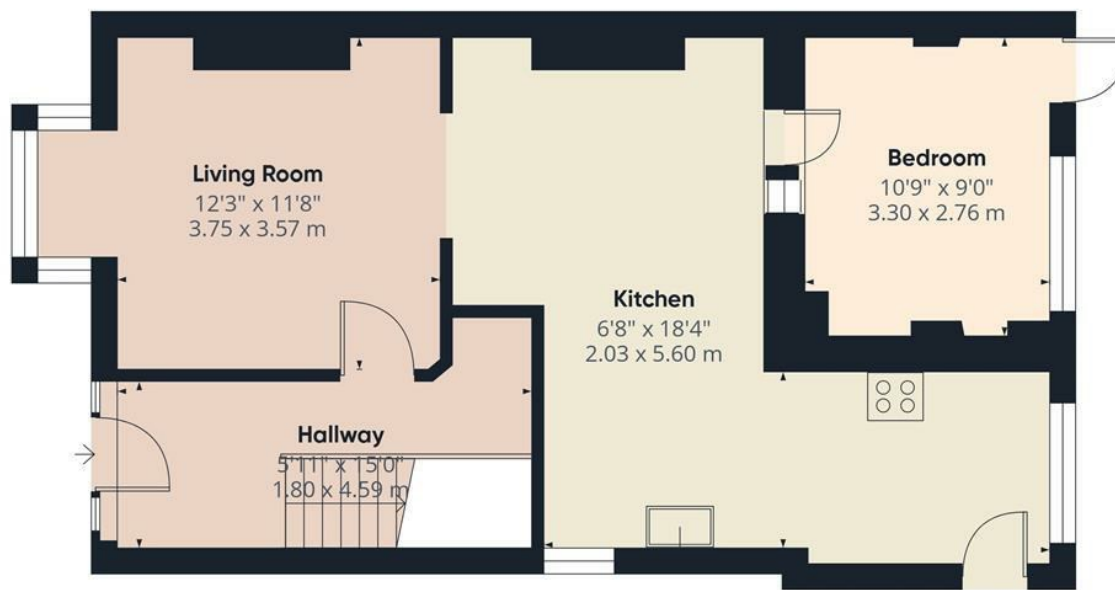
HOUSE  
RULES

HOUSE  
RULES



LIVE  
DREAM BIG  
GIVE LOVE  
LAUGH LOTS





Ground Floor



Floor 1

Approximate total area<sup>(1)</sup>

994 ft<sup>2</sup>

92.3 m<sup>2</sup>

(1) Excluding balconies and terraces

Calculations reference the RICS IPMS 3C standard. Measurements are approximate and not to scale. This floor plan is intended for illustration only.

GIRAFFE360